

MAPLE GROVE APARTMENT HOMES

Coastal, small-town living in the historic and quaint town of Steilacoom.

2851 Steilacoom Blvd
Steilacoom, WA 98388
maplegrove@dmcimail.com
(253) 588-5634
www.doblermanagement.com



Apartment Features

- Choose from One and Two Bedroom Floor Plans
- Updated Featuring Wood like LVP Plank Flooring and Painted Cabinets
- Energy Efficient Windows
- Lots of closet and Cabinet space
- Patio or Balcony Available

Community Features

- Park-like Setting in a Quiet Residential Neighborhood
- Free Onsite Clothing Care Centers
- Free Off-street Resident and Guest Parking
- Minutes to Pierce College
- Close to Parks, Athletic Fields and Fort Steilacoom Park

Experience small town living at the Maple Grove Apartments, situated in historical Steilacoom, a lovely coastal Pierce County community with charming neighborhoods. Located near Sunnyside Beach and Fort Steilacoom Park the Maple Grove Apartments is an easy commute to Joint Base Lewis-McChord (JBLM) and the cities of Lakewood, Dupont and Tacoma. Plus it is just minutes away from Pierce College. You will appreciate coming home to the beautifully landscaped grounds with mature trees and flowering shrubs.

From the I5 Freeway take the 512 Exit to South Tacoma Way and turn right. At the first light, which is Steilacoom Blvd, take a left. Continue for approximately four miles. The Maples Grove Apartments is on the right side just past the Pierce County library, which is on the left.

SMOKE- FREE
HOUSING
PIERCE COUNTY



Professionally Managed By:

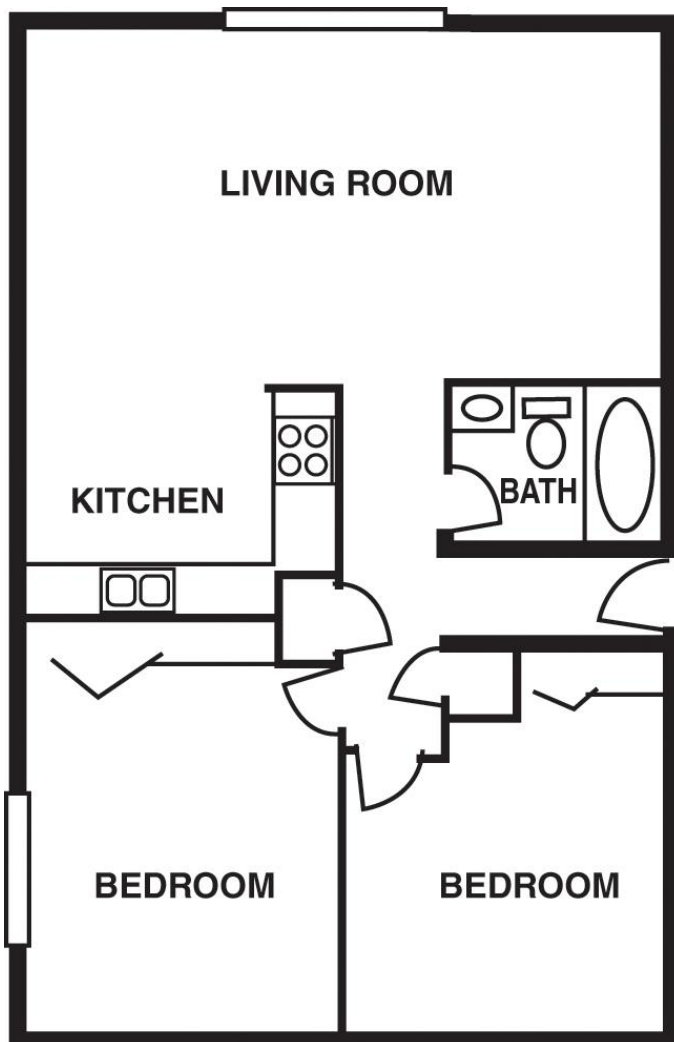
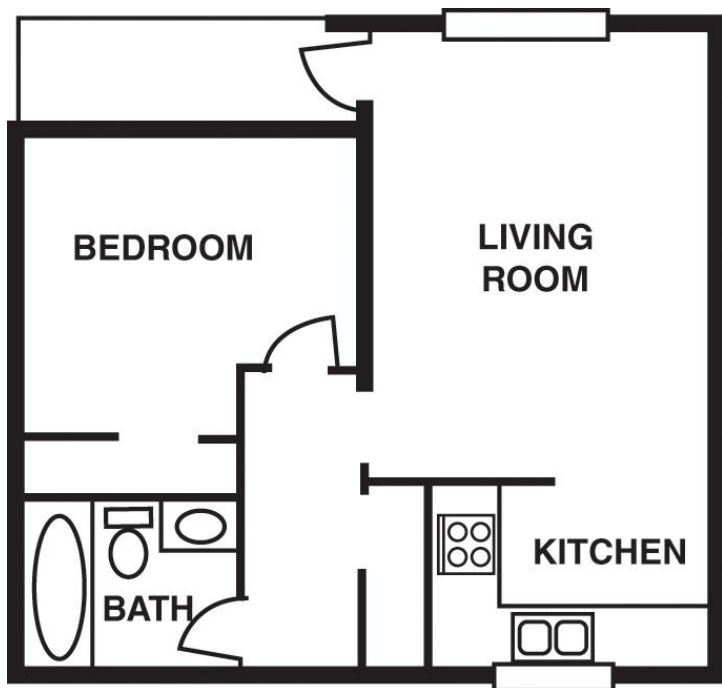
DMCI Dobler
Management
COMPANY, I N C .

MAPLE GROVE APARTMENT HOMES

Coastal, small-town living in the historic and quaint town of Steilacoom.

2851 Steilacoom Blvd
Steilacoom, WA 98388
maplegrove@dmcimail.com
(253) 588-5634
www.doblermanagement.com

One Bedroom
450-515 Square Feet
Starting at \$ _____



Two Bedroom
800 Square Feet
Starting at \$ _____

The rent, included features, plans, specifications, promotions, incentives, and available locations are subject to restrictions and may change without notice. Additional fees, deposits, and lease lengths may be required. Early termination of leases incur penalties and/or forfeiture of deposits and discounts. Stated dimensions and maps are approximate and should not be used as a representation of any precise or actual size, location or orientation. Not all features and views are available in all units. Photographs or illustrations used reflect artists' conceptions and are for illustrative purposes only and do not depict or indicate any preference regarding race, religion, gender, sexual orientation, disability, familial status, or national origin. Always contact the property rental office for the most up-to-date information. 08/2020

SMOKE-FREE
HOUSING
PIERCE COUNTY



Professionally Managed By:

DMCI Dobler
Management
COMPANY, INC.